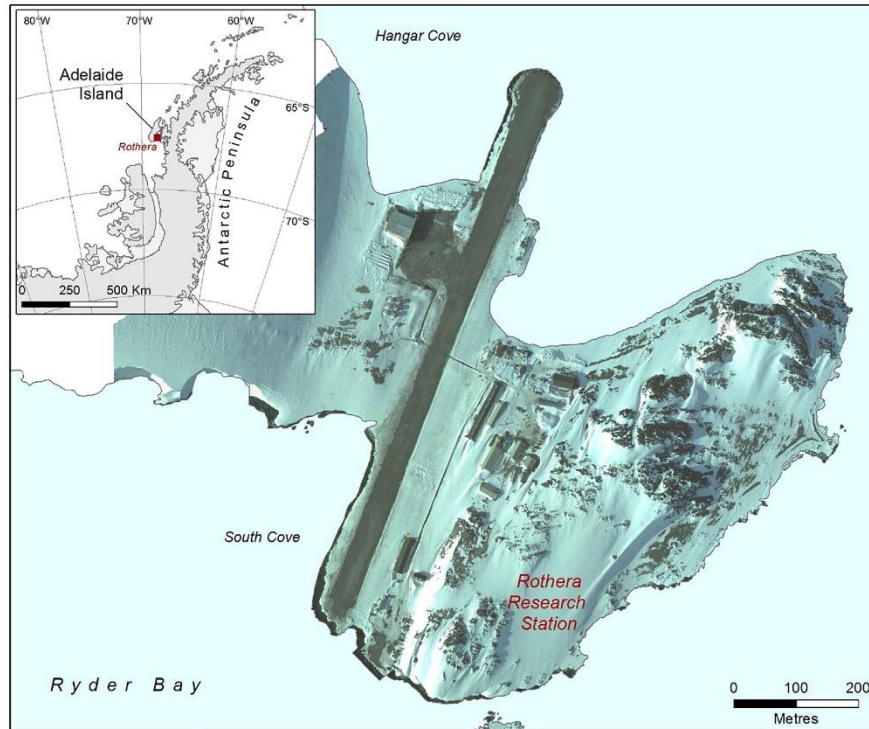


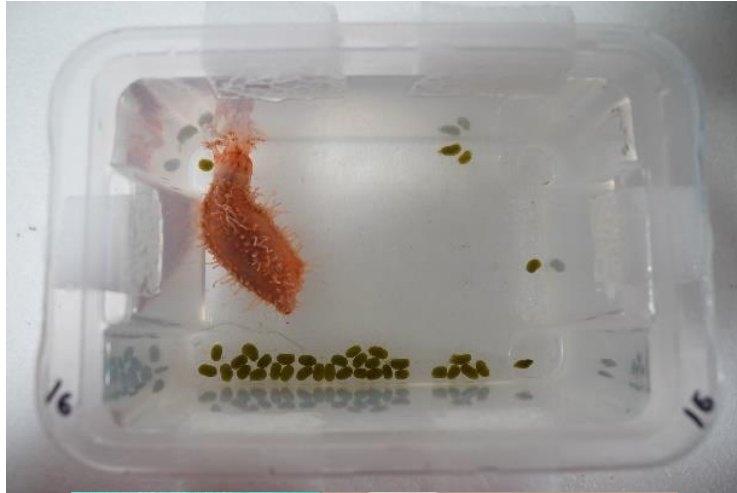
Spatial and temporal dynamics of Antarctic shallow benthic communities



Morley SA, Vause BJ, Robinson BJ, Souster T, Peck LS,
Nadescha Z, Barnes DKA



23 years of monitoring in Ryder Bay



Monthly
collections

- 9 species

Rothera Time
Series



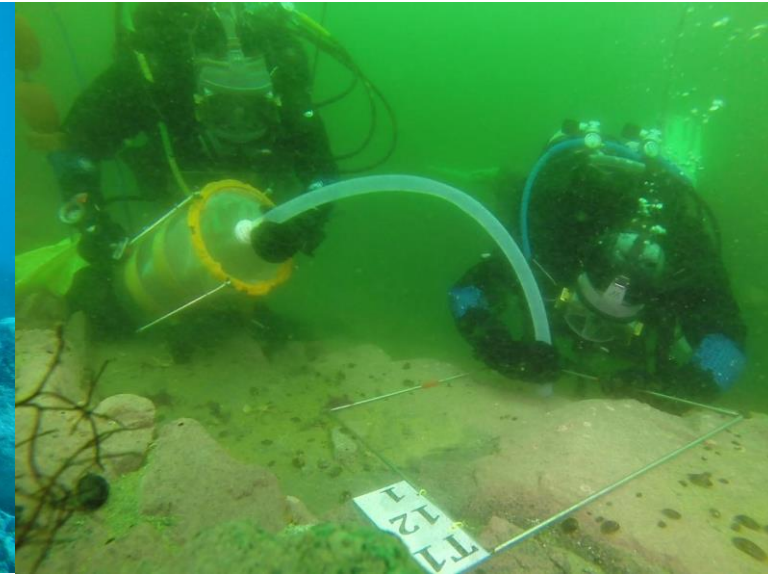
Oceanography

Ecophysiology

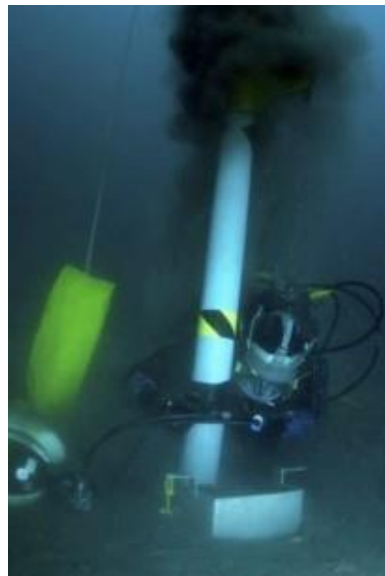
Reproduction

Monitoring benthic assemblages

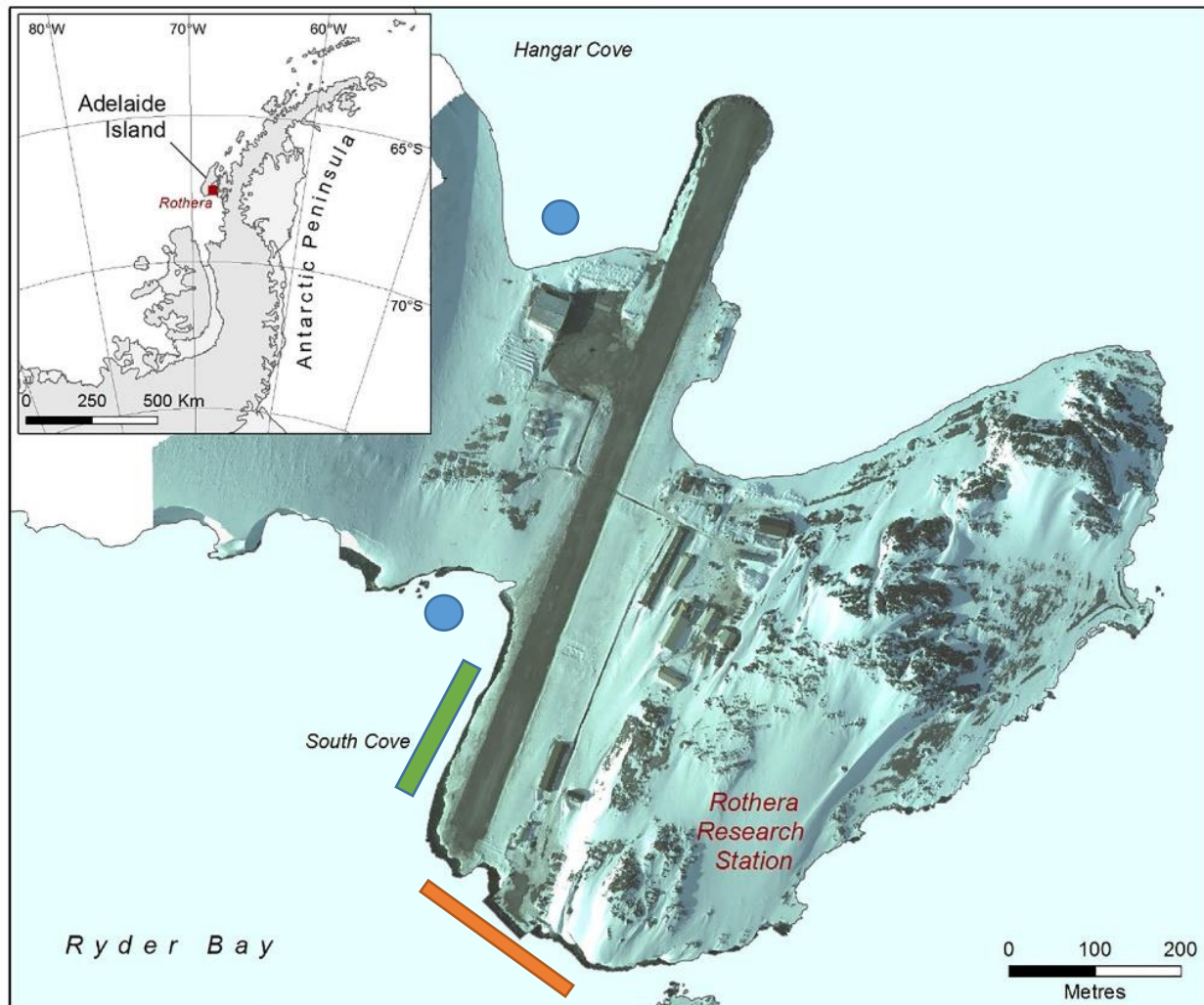
Rocky



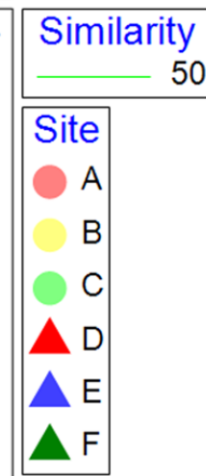
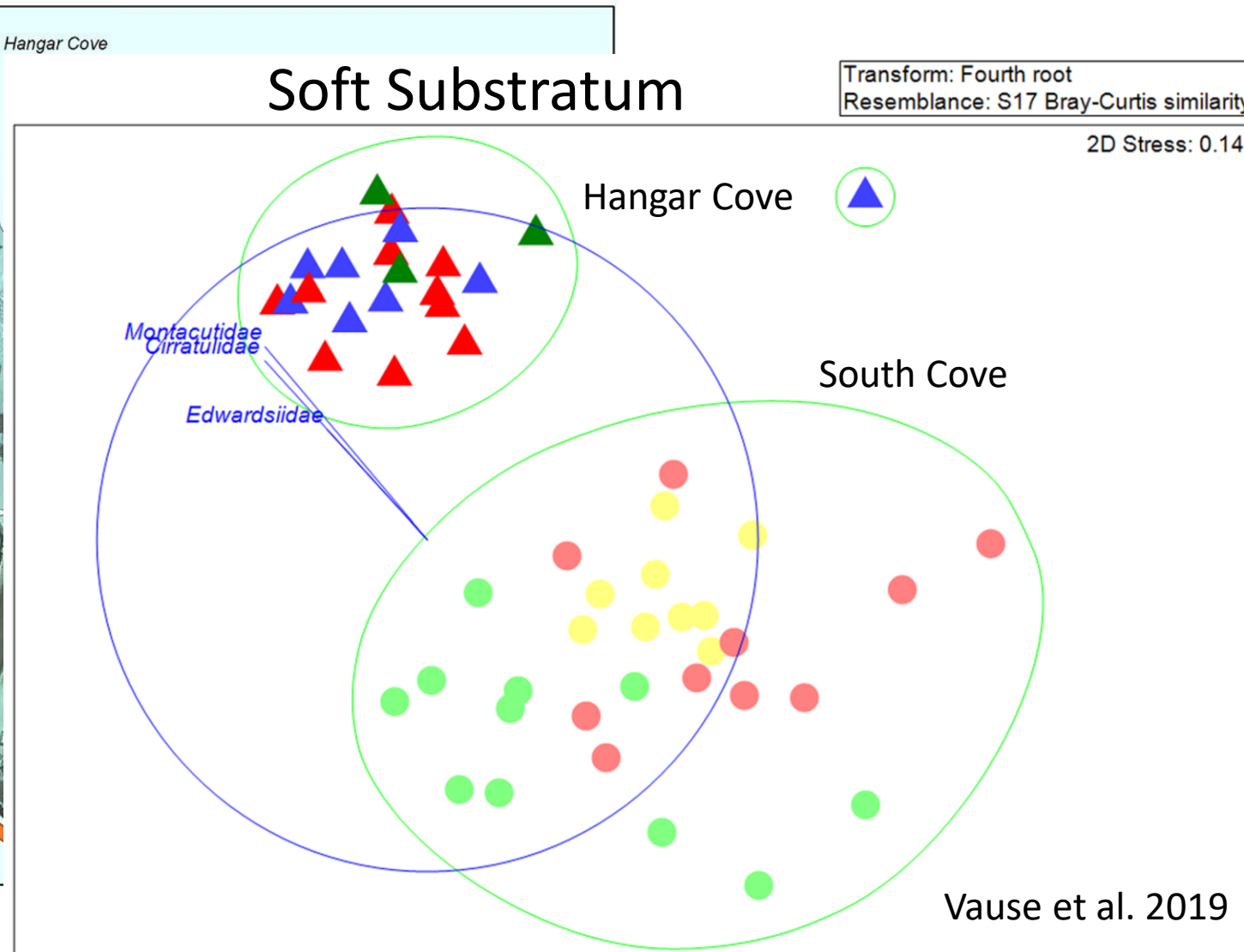
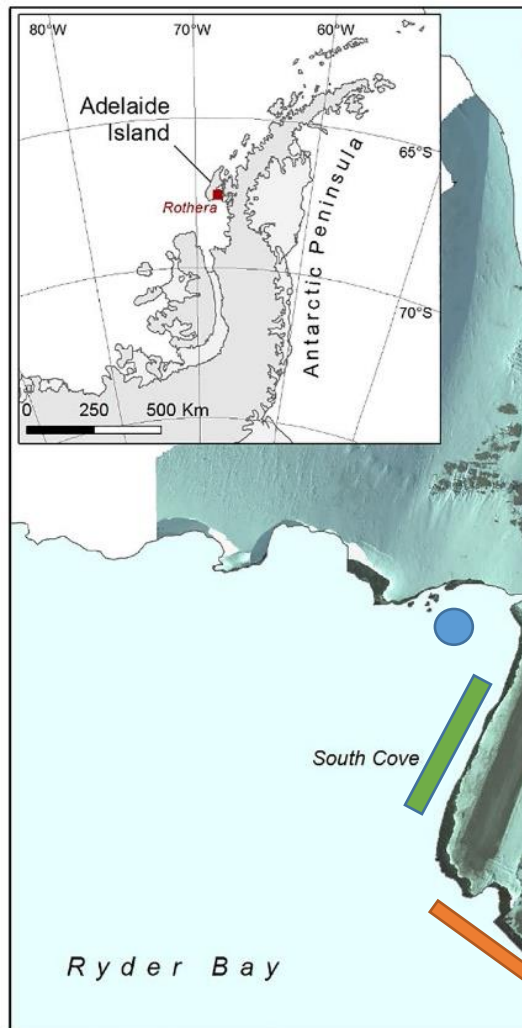
Soft



Assemblage Structure

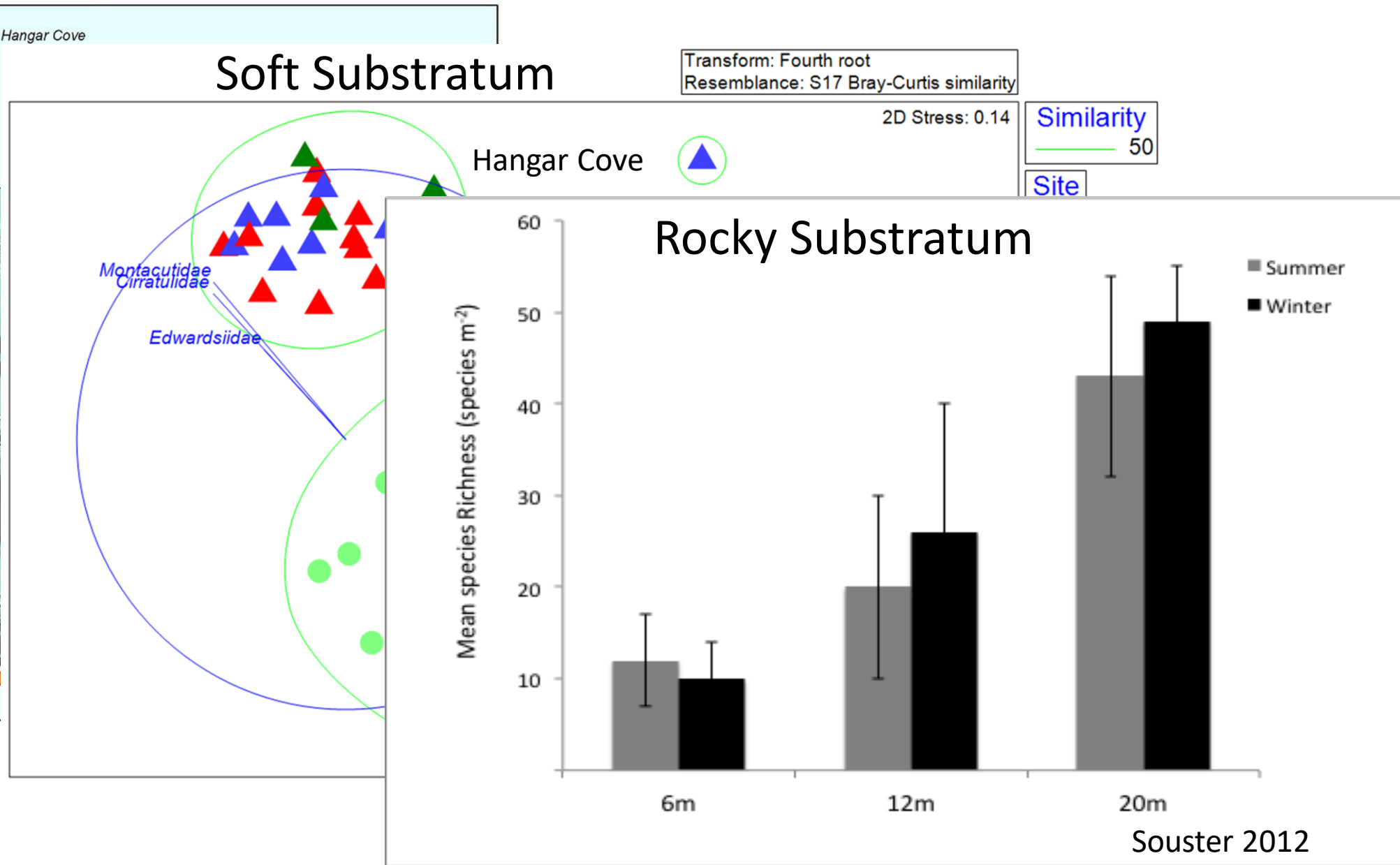
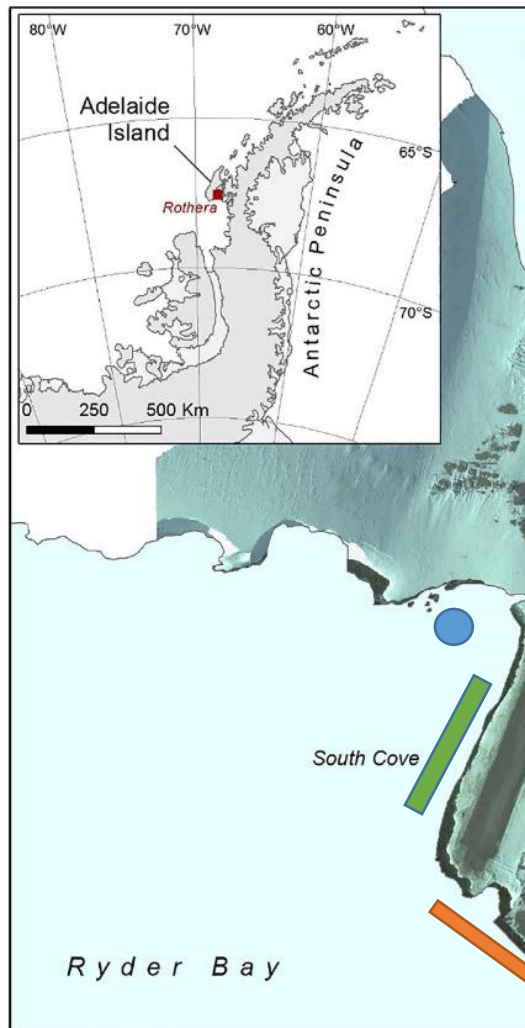


Assemblage Structure



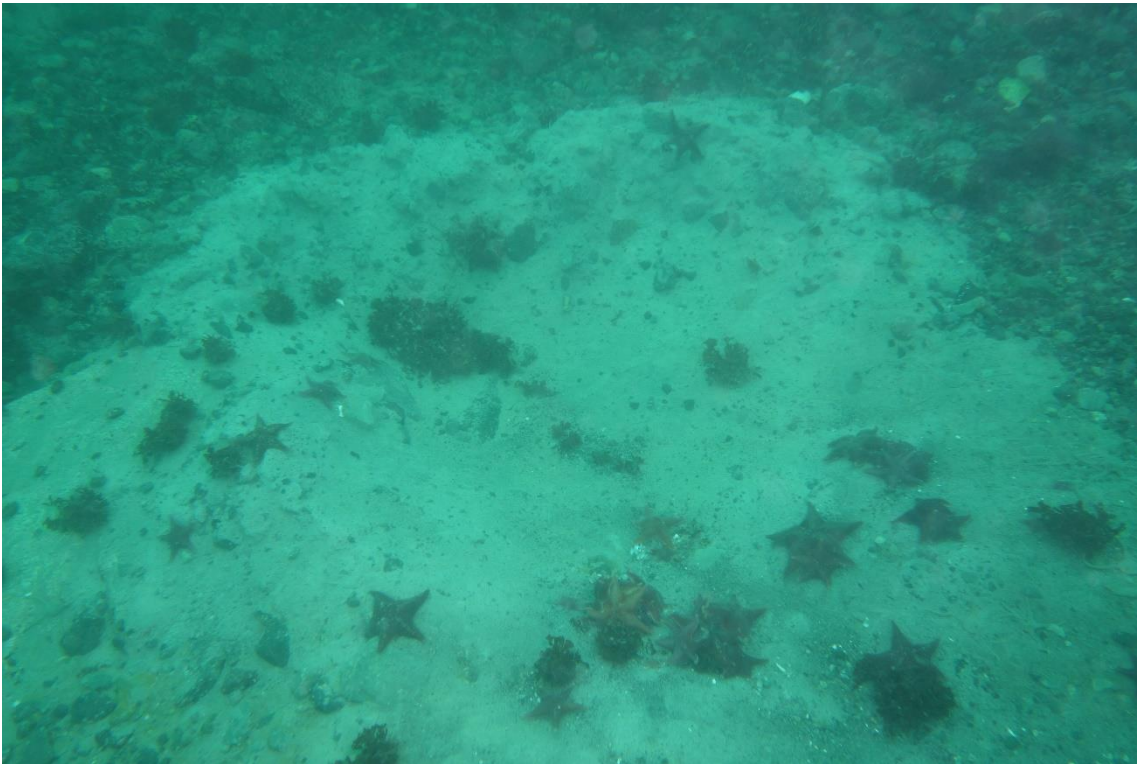
No
Interannual or
seasonal
differences

Assemblage Structure



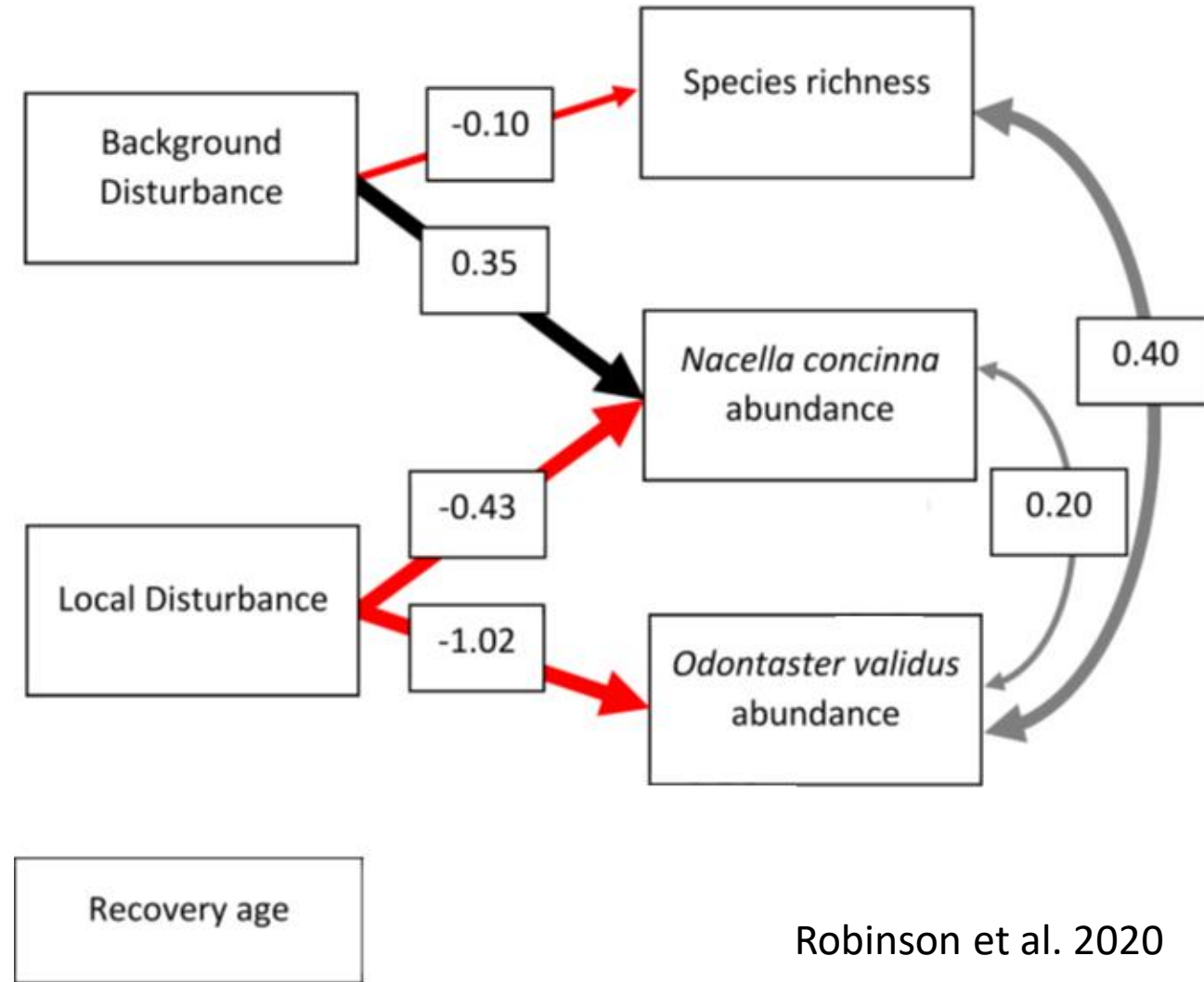
Mobility and Resilience

Soft substratum



- No signal of iceberg disturbance
- Importance of mobility

Rocky substratum



Understanding processes controlling biodiversity

1. No seasonal or interannual differences
2. Importance of dispersal capacity for resilience
 - I. Mobility
 - II. Larval dispersal

Ryder Bay

- Year round, long term, cross-discipline and multi-program

International initiatives

- SOOS, CoastCarb, MEASO etc.

Thanks!

